

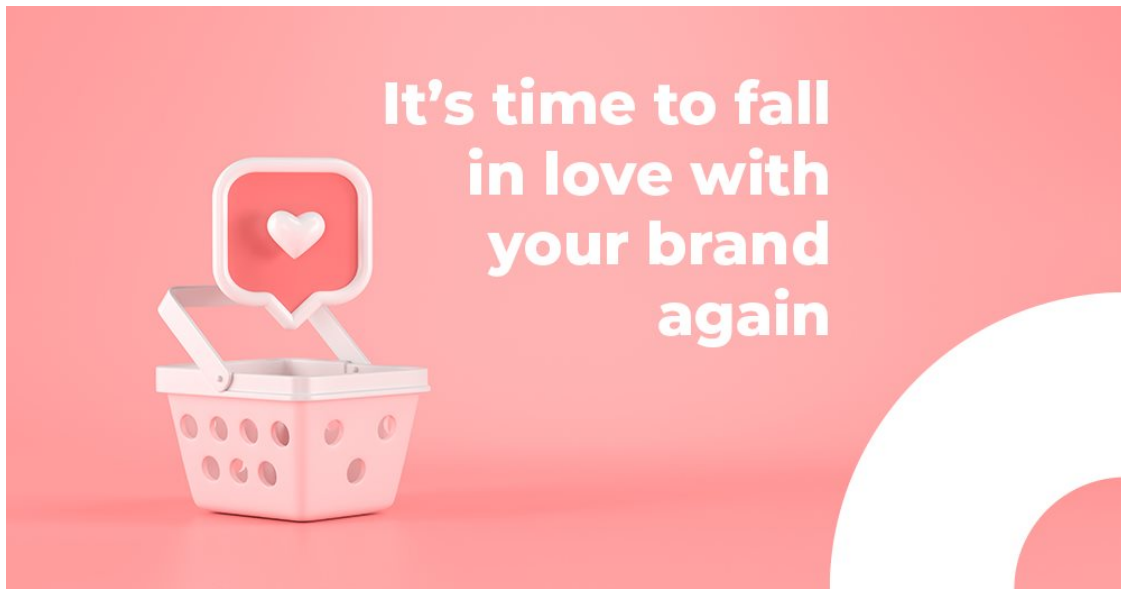
# Brands winning hearts with authentic connections

Issued by [Motherland OMNi](#)

28 Feb 2024

As February draws to a close let's celebrate a different kind of love story - the one between you and your customers. A genuine connection built on shared values, mutual respect, and understanding. Let's embrace a more powerful narrative: **your customers are the heroes, and your brand is their trusted guide.**

Traditionally marketing has focused on features, not benefits, leaving customers feeling talked at rather than engaged. It's time to rewrite the narrative. True connection comes from **actively listening**, understanding your customers' struggles and dreams, and positioning your brand as their **trusted guide**, not just a seller.



**Think StoryBrand, not self-promotion:**

It's all about **dialogue and co-creation**:

- **Your customers are the heroes:** They face real-life challenges – finding the perfect outfit, saving money, conquering load-shedding - not scripted problems.
- **Your brand is their guide:** Offer expertise, solutions, and support to help them achieve their goals.
- **The journey is theirs:** Don't preach, tell a story with them. Showcase how your brand empowers them to be the hero of their own narrative.

**Shift from speaking at them to engaging with them:**

- **Actively listen:** What are they saying on social media, in reviews, or directly to you? Understand their needs and concerns.
- **Communicate openly:** Address questions and concerns promptly and transparently. Trust is built on honesty and responsiveness.
- **Be present where they are:** Engage authentically on their preferred platforms, online and offline. Build a community beyond transactions.

**Love is an action, not just a feeling:**

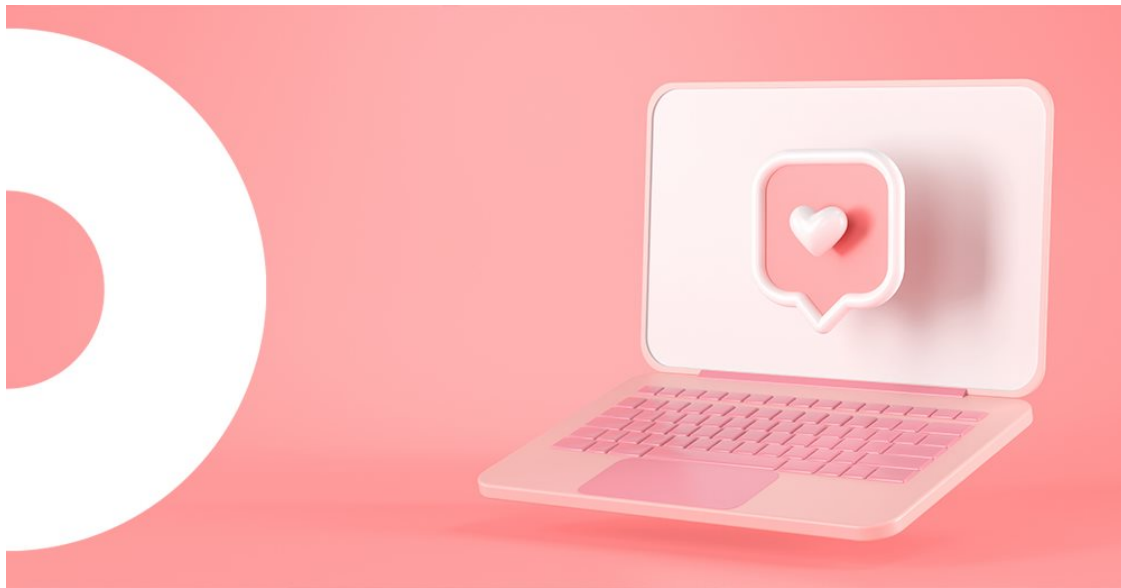
- **Go beyond discounts:** Offer personalised experiences, valuable content, and exceptional customer service that goes

the extra mile.

- **Surprise and delight:** Unexpected perks like birthday messages or free samples create lasting memories and foster loyalty.
- **Celebrate their individuality:** Tailor your offerings to their unique needs. One-size-fits-all solutions rarely win hearts.

#### Think local, think South African:

- **Solve challenges specific to South Africans:** Whether it's load-shedding solutions or locally sourced products, highlight how you understand their unique context.
- **Embrace local references and humour:** Speak their language and understand their culture. Think Nando's wit or Spur's self-deprecating charm.



#### Mzansi Magic: Brands that truly get their clients and why!

Forget technical jargon and tap into your customers' emotions! How does your brand make them feel? Confident and stylish like a Woolworths shopper? Empowered like a Nando's flame-grilled warrior? Use relatable humour and storytelling to showcase it.

South African brands are leading the way in authentic connections. Let's meet some masters of customer-centricity:

##### 1. Pedro's Chicken: The cheekily cheeky champions

Pedro's doesn't just sell chicken, they sell personality. Their witty ads, playful social media presence, and commitment to local ingredients resonate deeply with South Africans. They understand the power of humour, authenticity, and a touch of cheekiness - remember their playful dig at Nando's?

**Result? Loyal customers who feel like they're part of the Pedro's family.**

##### 2. Wimpy: I Love it when you speak foreign.

Wimpy doesn't just serve burgers, they speak Mzansi fluently. It's not just about humour; it's about inclusivity, understanding, and celebrating the diversity that makes South Africa unique.

**Result? Customers who feel seen, heard, and valued for who they are.**

##### 3. Toyota: Built for life, built for Mzansi

Toyota isn't just selling vehicles; they're selling a journey alongside their customers. Their campaigns resonate because

they show how their cars adapt and evolve alongside South Africans, facing various challenges and adventures. It's about understanding the local context and aspirations of their customers.

**Result? Loyalty that goes beyond just a purchase.**

#### **4. Albany: Together is where we belong.**

"Gees" isn't just slang in South Africa, it's a core value - the spirit of generosity, togetherness, and sharing good times. That's exactly what resonates in Albany Bakeries' "Together, it's where we belong" campaign. Their strength lies in embracing diversity, highlighting the beauty of sharing "gees" across boundaries. It wasn't about selling bread; it was about celebrating the values it connects us with - warmth, nourishment, and belonging.

**Result? Brand love and loyal customers who feel like they're part of the Albany family.**

**Why these brands get it:**

- They focus on the customer's journey, not their own.
- They communicate authentically and genuinely.
- They connect on an emotional level, not just a transactional one.
- They celebrate South Africa's unique culture and diversity.
- They build trust and respect through consistent actions and care.

**Join the customer-centric revolution:**

- **Listen to your customers:** Understand their needs, dreams, and frustrations.
- **Tell their story, not yours:** Make them the hero of your brand narrative.
- **Be present where they are:** Engage authentically on their preferred platforms.
- **Go beyond features:** Focus on benefits and solve their problems.
- **Show you care:** Be transparent, responsive, and build genuine relationships.

By putting your customers in the spotlight, celebrating their journey, and becoming their trusted guide, you'll cultivate a love story that goes beyond transactions and endures through thick and thin. So, forget the generic, embrace the lekker, and show your customers some genuine Mzansi love!

▫ **Motherland OMNi and Matriarch partner for powerful brand experiences** 30 Apr 2024

▫ **Don't sleep on the untapped power of community radio** 25 Apr 2024

▫ **Brands winning hearts with authentic connections** 28 Feb 2024

▫ **Building brand loyalty through authentic community engagement** 8 Feb 2024

▫ **Motherland OMNi brand experience manager Molly Xulu on mastering the evolving media landscape** 22 Jan

2024

#### **Motherland OMNi**



Motherland OMNi, is your Community and Brand Experience partner, specialising in reach, engagement, experiential and affinity solutions to authentically connect your brand to audiences.

[Profile](#) | [News](#) | [Contact](#) | [Twitter](#) | [Facebook](#) | [RSS Feed](#)

For more, visit: <https://www.bizcommunity.com>